

COB LED Catalog



www.edison-opto.com.tw
service@edison-opto.com.tw



Edison Opto Corporation

4F., No.800, Zhongzheng Rd., Zhonghe
Dist. 23586, New Taipei City, Taiwan
T+ 886 2 82276996
F+ 886 2 82276997

Edison Opto (Dong Guan) Co., Ltd.

B16, No.9, Xiju Rd., Xi-Cheng Industrial Park, Heng-li,
DongGuan City 523460, GuangDong Province, China
T +86-769-8101-2708
F +86-769-8101-2706

Edison Opto USA Corporation

1809 Excise Avenue, Suite 201,
Ontario, California 91761 USA
T+1 909 284 9710
F+1 909 460 8130

Yangzhou Edison Opto Corp.

No.101, Hua-Yang West Rd., Yangzhou City
225009, Jiangsu Province, China
T +86-514-8777-7101
F +86-514-8777-7102



CONTENTS

Edipower V HE Series	6
High Efficiency	
Edipower V HM Series	14
High Color Saturation	
Edipower Series	16
Stage lights	
Dimming Series	18
Dim to Warm/ Dim to Natural White	
Tunable Series	20
Dual Color	
AC COB Series	22
Driver on Board	



Edipower Series



Normal

Efficacy-3000K

Ra80_140-145lm/W
Ra90_115-120lm/W

Thermal Resistance

1.046 C/W

Temperature Phosphor Glue Surface

200°C

Chromaticity Range

5-Step

EPV

Ra80_160-165lm/W
Ra90_135-140lm/W

0.404 C/W

150°C

3-Step

20% UP

60% Down

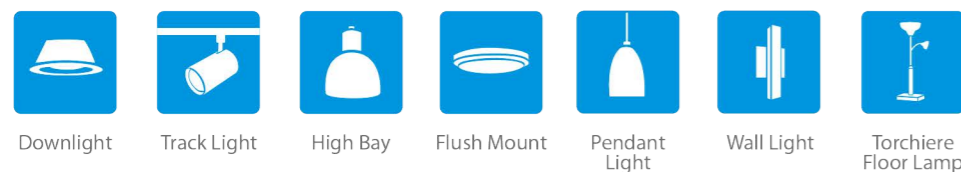
50°C Down

Upgraded

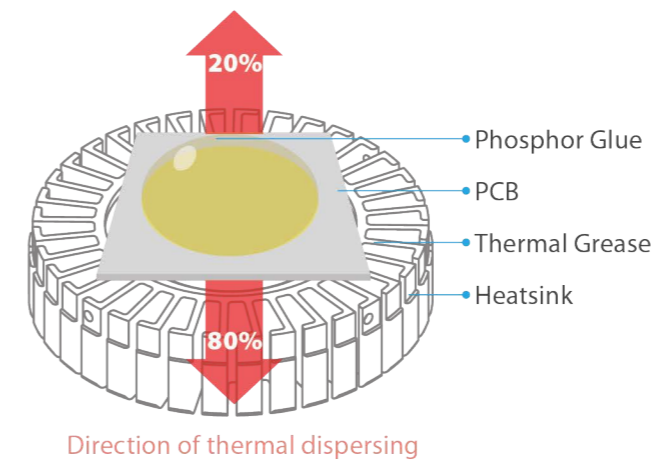
Description

- High efficiency of 165 lm/W @ 3000K Ra80 and 140 lm/W @3000K Ra90
- At 85/105 °C, L70 50000hrs of LM80 testing PASS
- Comply with ERP (Ra > 80 & R9 > 0) and CEC (Ra > 90 & R9 > 50)
- At Tj = 85, color consistency is compliant with 3-step MacAdam
- Low thermal resistance

Application

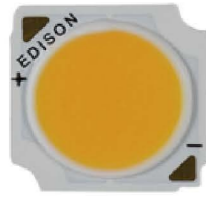


Temperature on the surface of phosphor glue can be decreased by 30% (30-50°C)

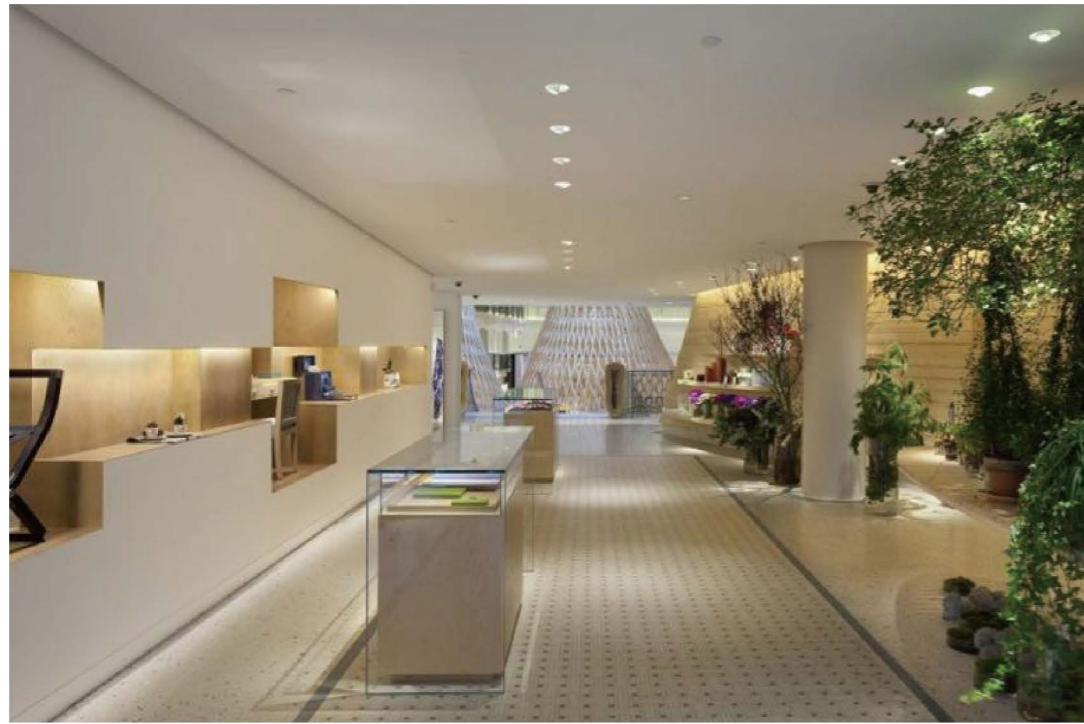


	Normal	EPV
Surface of phosphor glue	205.1°C	164.7°C
Temperature Difference	94.1 °C	36.4 °C
PCB	111.0°C	128.3°C
Temperature Difference	11.4 °C	11.6 °C
Heatsink	99.6°C	116.7°C
Rth	1.046°C/W	0.404°C/W

Edipower HE Series



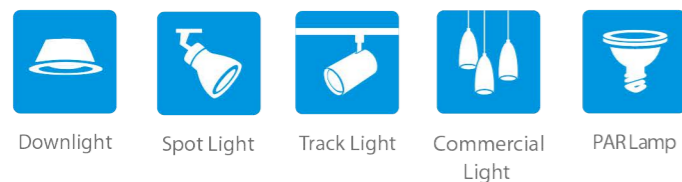
1313 Series
 Dimension : 13.5 * 13.5mm
 LES : 9.8mm



Description

- Based on the mirror aluminum MCPCB which excellent 98% reflectivity and High thermal conductivity.(k = 200 W/mK)
- Current input from 90mA to 720mA(3~26W)
- The ErP require CRI>80 and R9>0 specification compliance
- The CEC require CRI>90 and R9>50 specification compliance
- The LM80 report and eye safety report available

Application



Order Code	Dimension (mm)	LES (mm)	Power (W)	CCT (K)	Ra	Typ. Flux(lm)	lm/W	VF(V)	IF(mA)
2PHE032727P32030	13.5 * 13.5	Φ 9.8	3 ~ 6	2700K	80	481	154	34.8	90~180
2PHE033027P32030				3000K		496	158		
2PHE034027P32030				4000K		506	162		
2PHE035027P32030				5000K		513	164		
2PHE036527P32030				6500K		498	159		
2PHE032738P32030				2700K	90	409	131		
2PHE033038P32030				3000K		422	135		
2PHE034038P32030				4000K		430	137		
2PHE035038P32030				5000K		436	139		
2PHE036538P32030				6500K		423	135		
2PHE032756P32030				2700K	95	364	116		
2PHE033056P32030				3000K		383	127		
2PHE034056P32030				4000K		392	125		
2PHE035056P32030				5000K		398	127		
2PHE036556P32030				6500K		392	125		

Order Code	Dimension (mm)	LES (mm)	Power (W)	CCT (K)	Ra	Typ. Flux(lm)	lm/W	VF(V)	IF(mA)
2PHE062727P32030	13.5 * 13.5	Φ 9.8	6 ~ 12	2700K	80	944	151	34.8	90~180
2PHE063027P32030				3000K		974	155		
2PHE064027P32030				4000K		994	159		
2PHE065027P32030				5000K		1007	161		
2PHE066527P32030				6500K		977	156		
2PHE062738P32030				2700K	90	802	128		
2PHE063038P32030				3000K		828	132		
2PHE064038P32030				4000K		845	135		
2PHE065038P32030				5000K		856	137		
2PHE066538P32030				6500K		830	133		
2PHE062756P32030				2700K	95	728	116		
2PHE063056P32030				3000K		765	122		
2PHE064056P32030				4000K		783	125		
2PHE065056P32030				5000K		796	127		
2PHE066556P32030				6500K		783	125		

Order Code	Dimension (mm)	LES (mm)	Power (W)	CCT (K)	Ra	Typ. Flux(lm)	lm/W	VF(V)	IF(mA)
2PHE092727P32030	13.5 * 13.5	Φ 9.8	9 ~ 18	2700K	80	1412	150	34.8	270 ~540
2PHE093027P32030				3000K		1458	155		
2PHE094027P32030				4000K		1487	158		
2PHE095027P32030				5000K		1508	160		
2PHE096527P32030				6500K		1462	156		
2PHE092738P32030				2700K		90	1201		
2PHE093038P32030				3000K	1239		132		
2PHE094038P32030				4000K	1264		135		
2PHE095038P32030				5000K	95	1282	136		
2PHE096538P32030				6500K		1243	132		
2PHE092756P32030				2700K		1092	116		
2PHE093056P32030				3000K	1148	122			
2PHE094056P32030				4000K	1175	125			
2PHE095056P32030				5000K	1193	127			
2PHE096556P32030				6500K	1175	125			

Order Code	Dimension (mm)	LES (mm)	Power (W)	CCT (K)	Ra	Typ. Flux(lm)	lm/W	VF(V)	IF(mA)
2PHE132727P32030	13.5 * 13.5	Φ 9.8	13 ~ 26	2700K	80	1870	149	34.8	360 ~720
2PHE133027P32030				3000K		1931	154		
2PHE134027P32030				4000K		1969	157		
2PHE065027P32030				5000K		1997	159		
2PHE136527P32030				6500K		1936	155		
2PHE132738P32030				2700K		90	1590		
2PHE133038P32030				3000K	1641		131		
2PHE134038P32030				4000K	1674		134		
2PHE135038P32030				5000K	95	1697	135		
2PHE136538P32030				6500K		1646	131		
2PHE132756P32030				2700K		1457	116		
2PHE133056P32030				3000K	1530	122			
2PHE134056P32030				4000K	1567	125			
2PHE135056P32030				5000K	1591	127			
2PHE136556P32030				6500K	1567	125			



Edipower HE Series



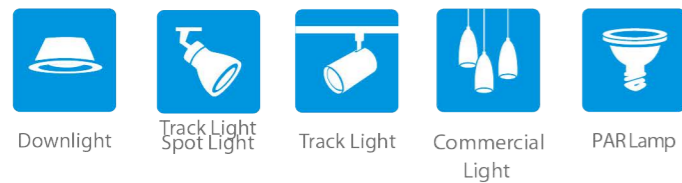
1919 Series
 Dimension : 19.0 * 19.0mm
 LES : 15.6mm



Description

- Based on the mirror aluminum MCPCB which excellent 98% reflectivity and High thermal conductivity.(k = 200 W/mK)
- Current input from 450mA to 1800mA(15~20W)
- Meet the ErP specification(CRI > 80 and R9 > 0)
- Meet the CEC specification (CRI > 90 and R9 > 50)
- The LM80 report and eye safety report available

Application



Order Code	Dimension (mm)	LES (mm)	Power (W)	CCT (K)	Ra	Typ. Flux(lm)	lm/W	VF(V)	IF(mA)
2PHE152727P34030	19.0 * 19.0	Φ 15.6	15~20	2700K	80	2442	156	34.8	450 ~900
2PHE153027P34030				3000K		2519	161		
2PHE154027P34030				4000K		2574	164		
2PHE155027P34030				5000K		2607	166		
2PHE156527P34030				6500K		2530	162		
2PHE152738P34030				2700K	90	2076	133		
2PHE153038P34030				3000K		2141	137		
2PHE154038P34030				4000K		2188	140		
2PHE155038P34030				5000K		2216	142		
2PHE156538P34030				6500K		2151	137		
2PHE152756P34030				2700K	95	1821	116		
2PHE153056P34030				3000K		1913	127		
2PHE154056P34030				4000K		1958	125		
2PHE155056P34030				5000K		1989	127		
2PHE156556P34030				6500K		1958	125		

Order Code	Dimension (mm)	LES (mm)	Power (W)	CCT (K)	Ra	Typ. Flux(lm)	lm/W	VF(V)	IF(mA)
2PHE182727P34030	19.0 * 19.0	Φ 15.6	18~36	2700K	80	2919	156	34.8	540 ~1080
2PHE183027P34030				3000K		3013	161		
2PHE184027P34030				4000K		3075	164		
2PHE185027P34030				5000K		3115	166		
2PHE186527P34030				6500K		3021	162		
2PHE182738P34030				2700K	90	2481	133		
2PHE184038P34030				3000K		2561	137		
2PHE183038P34030				4000K		2613	140		
2PHE185038P34030				5000K		2648	142		
2PHE186538P34030				6500K		2568	137		
2PHE182756P34030				2700K	95	2185	116		
2PHE183056P34030				3000K		2295	127		
2PHE184056P34030				4000K		2350	125		
2PHE184056P34030				5000K		2387	127		
2PHE185056P34030				6500K		2350	125		

Order Code	Dimension (mm)	LES (mm)	Power (W)	CCT (K)	Ra	Typ. Flux(lm)	lm/W	VF(V)	IF(mA)
2PHE242727P34030	19.0 * 19.0	Ø 15.6	24 ~ 48	2700K	80	3927	157	34.8	720 ~1440
2PHE243027P34030				3000K		4054	162		
2PHE244027P34030				4000K		4136	165		
2PHE245027P34030				5000K		4191	167		
2PHE246527P34030				6500K		4065	162		
2PHE242738P34030				2700K	3338	133	90		
2PHE243038P34030				3000K	3445	137			
2PHE244038P34030				4000K	3516	140			
2PHE245038P34030				5000K	3562	142	95		
2PHE246538P34030				6500K	3455	138			
2PHE242756P34030				2700K	2913	116			
2PHE243056P34030				3000K	3062	122			
2PHE244056P34030				4000K	3133	125			
2PHE245056P34030				5000K	3182	127			
2PHE246556P34030				6500K	3133	125			

Order Code	Dimension (mm)	LES (mm)	Power (W)	CCT (K)	Ra	Typ. Flux(lm)	lm/W	VF(V)	IF(mA)
2PHE302727P34030	19.0 * 19.0	Ø 15.6	30 ~ 60	2700K	80	4879	156	34.8	900 ~1800
2PHE303027P34030				3000K		5038	161		
2PHE304027P34030				4000K		5137	164		
2PHE305027P34030				5000K		5209	166		
2PHE306527P34030				6500K		5049	161		
2PHE302738P34030				2700K	4147	132	90		
2PHE303038P34030				3000K	4282	137			
2PHE304038P34030				4000K	4367	139			
2PHE305038P34030				5000K	4427	141	95		
2PHE306538P34030				6500K	4292	137			
2PHE302756P34030				2700K	3641	116			
2PHE303056P34030				3000K	3825	122			
2PHE304056P34030				4000K	3917	125			
2PHE305056P34030				5000K	3987	127			
2PHE306556P34030				6500K	3917	125			



Edipower HM Series



1313 Series
 Dimension : 13.5 * 13.5mm
 LES : 3.5mm

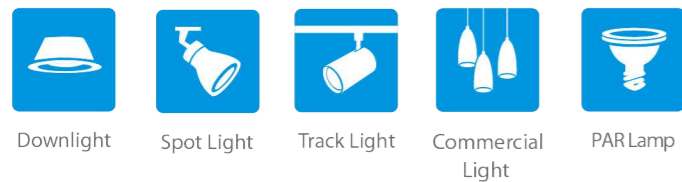


Order Code	Dimension (mm)	LES (mm)	Power (W)	CCT (K)	Ra	Typ. Flux(lm)	lm/W	VF(V)	IF(mA)
2PHM102727P55030	13.5 * 13.5	Φ 3.5	10	2700K	80	1017	106	9.1	1050
2PHM103027P55030				3000K		1048	110		
2PHM104027P55030				4000K		1135	119		
2PHM105027P55030				5000K		1079	113		
2PHM106527P55030				6500K		1058	111		
2PHM102738P55030				2700K		810	85		
2PHM103038P55030				3000K	850	89			
2PHM104038P55030				4000K	927	97			
2PHM105038P55030				5000K	876	92			
2PHM106538P55030				6500K	859	90			
2PHM102756P55030				2700K	744	78			
2PHM103056P55030				3000K	771	81			
2PHM104056P55030				4000K	806	84			
2PHM105056P55030				5000K	794	83			
2PHM106556P55030				6500K	786	82			

Description

- Based on the mirror aluminum MCPCB which excellent 98% reflectivity and High thermal conductivity.(k = 200 W/mK)
- Current input 1050mA
- Meet the ErP specification(CRI > 80 and R9 > 0)
- Meet the CEC specification (CRI > 90 and R9 > 50)

Application



Edipower Series



2828 Series

Dimension : 28.0 * 28.0mm

LES : 23.1mm



Description

- Based on the mirror aluminum MCPCB which excellent 98% reflectivity and High thermal conductivity.(k = 200 W/mK)
- Current input from 1080mA to 6100mA(55~300W)
- Meet the ErP specification(CRI > 80 and R9 > 0)
- Meet the CEC specification (CRI > 90 and R9 > 50)
- The LM80 report and eye safety report available

Application



Spot Light



Stage Light



High Bay

Order Code	Dimension (mm)	LES (mm)	Power (W)	CCT (K)	Ra	Typ. Flux(lm)	lm/W	VF(V)	IF(mA)
2PHE55WW56P35020	28.0 * 28.0	Φ 23.1	55 ~ 157	3000K	95	6899	122	52.2	1080 ~ 2760
2PHE55WN56P35020				4000K		7064	125		
2PHE55WC56P35020				5700K		7119	126		

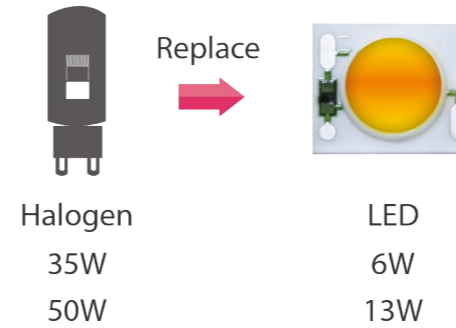
Order Code	Dimension (mm)	LES (mm)	Power (W)	CCT (K)	Ra	Typ. Flux(lm)	lm/W	VF(V)	IF(mA)
2PHE60WW56P35020	28.0 * 28.0	Φ 23.1	60 ~ 171	3000K	95	7452	122	37.7	1620 ~ 4140
2PHE60WN56P35020				4000K		7631	125		
2PHE60WC56P35020				5700K		7690	126		

Order Code	Dimension (mm)	LES (mm)	Power (W)	CCT (K)	Ra	Typ. Flux(lm)	lm/W	VF(V)	IF(mA)
2PHE83WW56P35020	28.0 * 28.0	Φ 23.1	83 ~ 236	3000K	95	10348	122	52.2	1620 ~ 4140
2PHE83WN56P35020				4000K		10596	125		
2PHE83WC56P35020				5700K		10679	126		

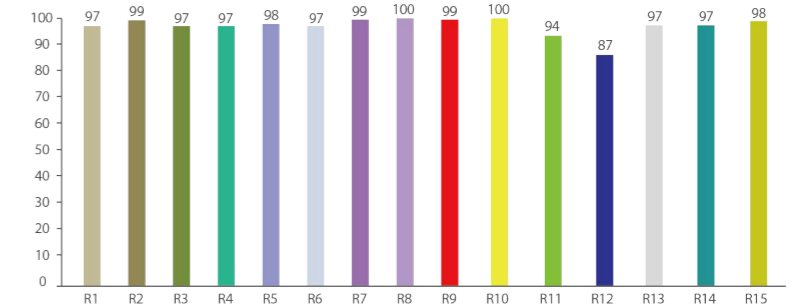
Order Code	Dimension (mm)	LES (mm)	Power (W)	CCT (K)	Ra	Typ. Flux(lm)	lm/W	VF(V)	IF(mA)
2PHMC0WW56P35030	28.0 * 28.0	Φ 23.1	300	3000K	95	24879	83	49	6100
2PHMC0NW56P35030				4000K		25748	86		
2PHMC0CW56P35030				5700K		25541	85		

Dimming Series

Dim to Warm / Dim to Natural White



R1~R15, 2000K~3000K



Dim to Warm Series 2000K to 3000K

Ra	R1	R2	R3	R4	R5	R6	R7	R8	R9	R10	R11	R12	R13	R14	R15
98.0	97.0	99.0	97.0	97.0	98.0	97.0	99.0	100	99.0	100	94.0	87.0	97.0	97.0	98.0

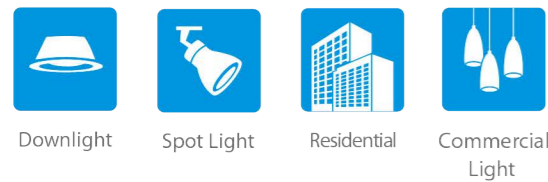
Dim to Natural White Series 2700K to 4000K

Ra	R1	R2	R3	R4	R5	R6	R7	R8	R9	R10	R11	R12	R13	R14	R15
96.0	97.0	96.0	92.0	97.0	95.0	92.0	98.0	97.0	87.0	87.0	96.0	73.0	96.0	95.0	96.0

Description

- Alike the effect of halogen lamps, it's easy to switch color temperature from 2000K to 3000K or from 2700K to 4000K with Dimming Series
- High Ra (Ra=95, R9=85) and good color uniformity
- High efficiency of 85 ~ 100 lm / W
- Suitable for general lighting and scenario lighting applications

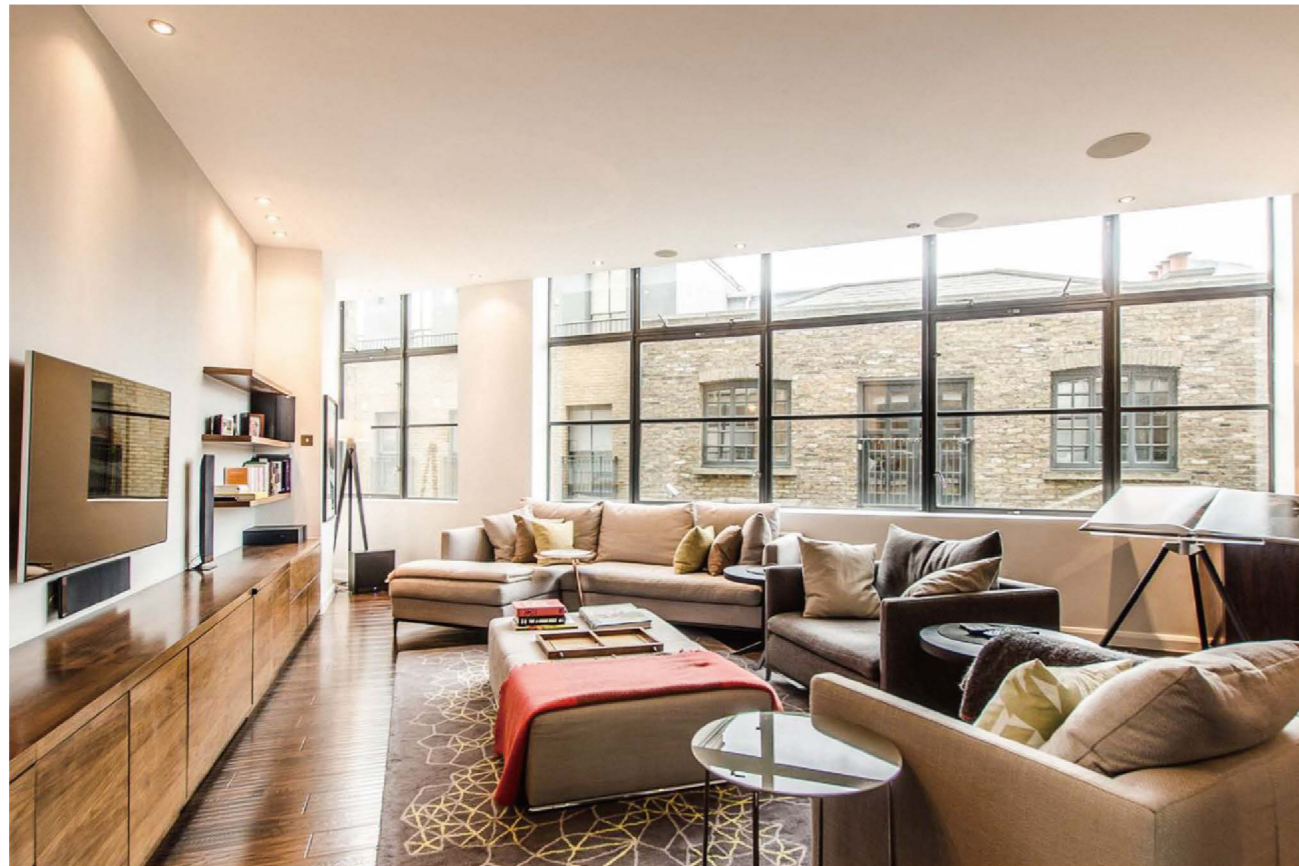
Application



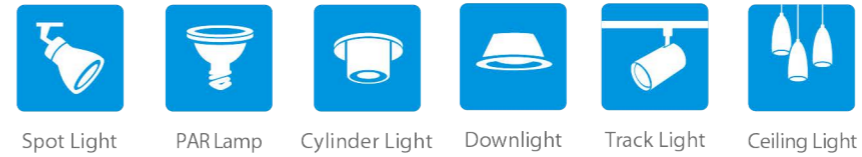
Order Code	Dimension (mm)	LES (mm)	Power (W)	CCT (K)	Ra	Typ. Flux(lm)	lm/W	VF(V)	IF(mA)
2PDW13WW49P49001	12.0*15.0*1.0	Ø8.6	1.0	2000	92.5	70	80	29.0	30
			13.0	3000	97.5	1105	85	37.0	350
2PDW06WW49P49001	12.0*15.0*1.0	Ø8.6	1.0	2000	92.0	60	60	15.0	70
			6.5	3000	98.0	560	90	18.5	350
2PDW13NW49P49001	12.0*15.0*1.0	Ø8.6	1.0	2700	95.5	95	110	29.0	30
			13.0	4000	96.0	1310	100	37.0	350
2PDW06NW49P49001	12.0*15.0*1.0	Ø8.6	1.0	2700	96.5	85	80	15.0	70
			6.5	4000	95.5	665	105	18.5	350
2PDW06WW49P49002	12.0*15.0*1.0	Ø8.6	0.5	2000	94.0	36	85	29.0	15
			6.0	3000	98.0	495	85	37.5	160
2PDW06NW49P49002	12.0*15.0*1.0	Ø8.6	0.5	2700	95.5	45	105	29.0	15
			6.0	4000	96.5	570	95	37.5	160

Tunable Series

Dual Color



Application

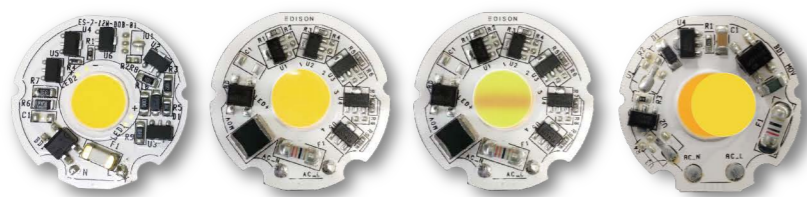


Order Code	Dimension (mm)	LES (mm)	Power (W)	CCT (K)	Ra	Typ. Flux(lm)	lm/W	VF(V)	IF(mA)	
2PTU10WN49P53003	13.5 *13.5	Ø9.8	10	1800	95	760	75	36.0	280	
				4000		1070	101	37.9		
2PTU10WC49P53003	13.5 *13.5	Ø9.8	10	2700	95	1060	105	36.0		
				6500		1190	112	37.9		
2PTU10WN49P53004	13.5 *13.5	Ø9.8	10	2700	95	908	90	36.0		
				4000		988	93	37.9		
2PTU10WN27P53001	13.5 *13.5	Ø9.8	10	2700	80	1355	134	36.0		
				4000		1290	122	37.9		
2PTU25WN49P54003	13.5 *13.5	Ø15.6	25	1800	95	2080	83	36.0		700
				4000		2720	103	37.9		
2PTU25WC49P54003	13.5 *13.5	Ø15.6	25	2700	95	2775	110	36.0		
				6500		2995	113	37.9		
2PTU25WN49P54004	13.5 *13.5	Ø15.6	25	2700	95	2590	103	36.0		
				4000		2745	103	37.9		
2PTU25WN27P54001	13.5 *13.5	Ø15.6	25	2700	80	3550	141	36.0		
				4000		3390	128	37.9		

Description

- High luminous flux and efficacy
- Shift in a wide range of color temperature
- Superior color saturation, and color uniformity
- Suitable for general lighting and scenario lighting applications

AC DOB Module Series



Application



Downlight



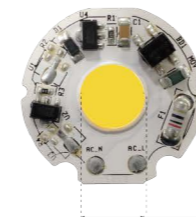
Track Light



Pendant Light

AC COB PHI 29 Series

- Works in 120 / 230V environment.
- Compatible with TRIAC dimmers.
- Excellent color consistency is compliant with 3-step MacAdam ellipse.
- Extends module lifetime with over-temperature protection (OTP) mechanism
- Efficacy up to 105 lm / W @ Ra80; 95 lm/W @ Ra90



Φ9,60

- 120V 7/10/12/14W
- 230V 7/10/12/14W



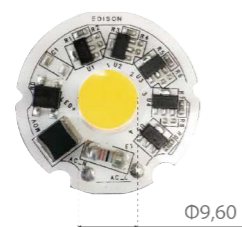
Order Code	Dimension (mm)	LES (mm)	Input Voltage	Power (W)	CCT (K)	Ra	Typ. Flux(lm)	lm/W	PF	THD	Percent Flicker(%)
2DAACN8012073008	Φ33*1.0	Φ9.6	120	7	3000	80	700	99	> 0.90	< 20	100
2DAACN8012103008				10			860	86			
2DAACN8012123005				12			1340	112			
2DAACN8012143008				14			1410	101			
2DAACN8023073008			230	7			690	99			
2DAACN8023103008				10			875	88			
2DAACN8023123005				12			1189	99			
2DAACN8023143005				14			1311	94			
2DAACN9012073002			90	120		7	610	86			
2DAACN9012103002						10	750	75			
2DAACN9012123005						12	1170	98			
2DAACN9012143002						14	1230	88			
2DAACN9023073008				230		7	620	89			
2DAACN9023103006						10	787	79			
2DAACN9023123005						12	1088	91			
2DAACN9023143005						14	1192	85			

AC COB PHI 33 Series

- Works in 120 / 230V environment.
- Compatible with TRIAC dimmers.
- Excellent color consistency is compliant with 3-step MacAdam ellipse.
- Extends module lifetime with over-temperature protection (OTP) mechanism
- Efficacy up to 105 lm / W @ Ra80; 95 lm/W @ Ra90



■ 120V 7/10/12/14W



■ 230V 7/10/12/14W



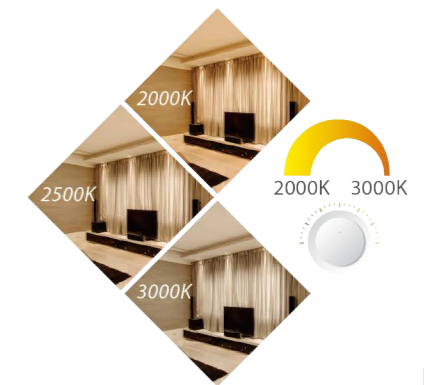
Order Code	Dimension (mm)	LES (mm)	Input Voltage	Power (W)	CCT (K)	Ra	Typ. Flux(lm)	lm/W	PF	THD	Percent Flicker(%)	
2DAACN8012073002	Φ33*1.0	Φ9.6	120	7	3000	80	760	109	> 0.95	< 20	100	
2DAACN8012103002				10			1060	106				
2DAACN8012123002				12			1200	100				
2DAACN8012143002				14			1420	101				
2DAACN8023073006			230	7			810	116				
2DAACN8023103006				10			1075	108				
2DAACN8023123006				12			1300	108				
2DAACN8023143006				14			1435	103				
2DAACN9012073002			120	90		7	650	93				
2DAACN9012103002						10	905	91				
2DAACN9012123002						12	1020	85				
2DAACN9012143002						14	1210	86				
2DAACN9023073006						230	7	690				99
2DAACN9023103006							10	915				92
2DAACN9023123006							12	1105				92
2DAACN9023143006							14	1220				87

AC DOB Dim to Warm Series

- Easy to adjust brightness from 100% to 10%
- Alike halogen lamps, this module with high Ra (Ra=95, R9 >90) is able to adjust color temperature between 3000K and 2000K
- Compatible with TRIAC dimmers
- Extends module lifetime with over-temperature protection (OTP) mechanism
- Efficacy up to 85 lm/W @ Ra95



230V 7/10/12/14W



Order Code	Dimension (mm)	LES (mm)	Input Voltage	Power (W)	CCT (K)	Ra	Typ. Flux(lm)	lm/W	PF	THD	Percent Flicker(%)
2DATCN9023073006	Φ33*0.9	Φ9.6	230	7	3000	90	595	85	> 0.95	< 20	100
2DATCN9023103006				10			805	82			
2DATCN9023123006				12			975	82			
2DATCN9023143006				14			1130	81			

AC DOB Module Series



AC COB PHI 38 / 57 Series

- Works in 230V environment.
- Compatible with TRIAC dimmers.
- Excellent color consistency is compliant with 3-step MacAdam ellipse.
- Extends module lifetime with over-temperature protection (OTP) mechanism
- Efficacy up to 105 lm / W @ Ra80; 95 lm/W @ Ra90
- 94V0 PC holder available

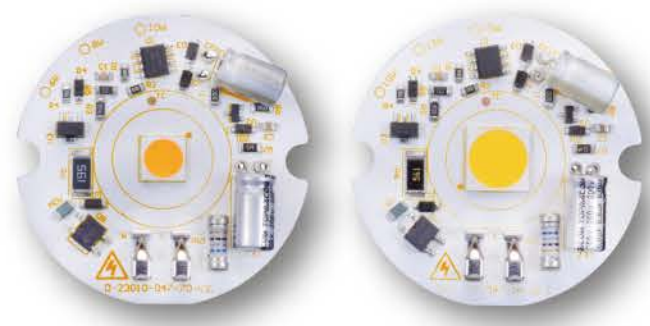


Application



Order Code	Dimension (mm)	LES (mm)	Input Voltage	Power (W)	CCT (K)	Ra	Typ. Flux(lm)	lm/W	PF	THD	Percent Flicker(%)
5ELACN3T23063001	Φ38*1.0	Φ6.3	230	6	3000	80	540	90	> 0.90	< 30	100
5ELACN3T23103003				10			855	86			
5ELACN3T23103001		Φ9.6	230	10			1040	104			
5ELACN3T23153001				15			1485	99			
5ELACN3T23063002	Φ57*1.0	Φ6.3	230	6	3000	80	520	84	> 0.90	< 30	10
5ELACN3T23103004				10			855	86			
5ELACN3T23103002		Φ9.6	230	10			1040	104			
5ELACN3T23153002				15			1485	99			

AC DOB Module Series



AC COB PHI 47 Series

- Works in 230V environment.
- Compatible with TRIAC dimmers.
- Excellent color consistency is compliant with 3-step MacAdam ellipse.
- Extends module lifetime with over-temperature protection (OTP) mechanism
- Efficacy up to 105 lm / W @ Ra80; 95 lm/W @ Ra90
- 94V0 PC holder available



Order Code	Dimension (mm)	LES (mm)	Input Voltage	Power (W)	CCT (K)	Ra	Typ. Flux(lm)	lm/W	PF	THD	Percent Flicker(%)
5ELACN3T23063005	Φ47*1.0	Φ6.3	230	6	3000	80	600	100	> 0.90	< 30	10
5ELACN3T23083005				8			760	95			
5ELACN3T23103005				10			920	92			
5ELACN3T23103006				10			1050	105			
5ELACN3T23123006				12			1140	95			

Application

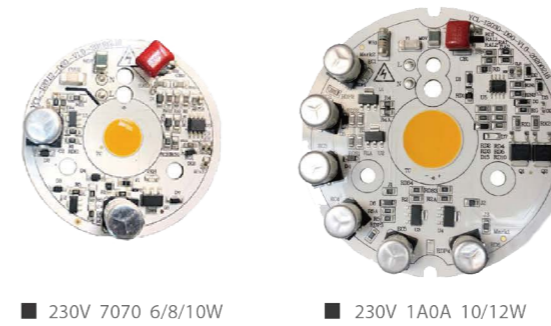


AC DOB Module Series

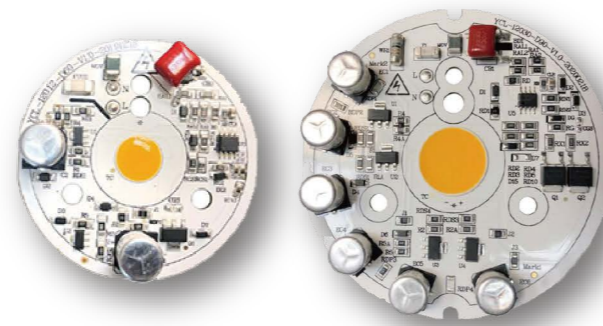


AC COB PHI 60 / 90 Series

- Works in 120V environment.
- Compatible with TRIAC dimmers.
- Excellent color consistency is compliant with 3-step MacAdam ellipse.
- Extends module lifetime with over-temperature protection (OTP) mechanism
- Efficacy up to 105 lm / W @ Ra80; 95 lm/W @ Ra80



Order Code	Dimension (mm)	LES (mm)	Input Voltage	Power (W)	CCT (K)	Ra	Typ. Flux(lm)	lm/W	PF	THD	Percent Flicker(%)
2DBACE8012123001	Φ60*1.0	Φ12	120	12	3000	80	1050	88	> 0.90	< 30	30
2DBACE8012303001	Φ90*1.0	Φ20		30			3000	100			



Application

